

RoHS 2.0

产品安装视频
PRODUCT INSTALLATION VIDEO

技术要求:

TECHNICAL REQUIREMENTS:

- 1.材料: 所有材质均符合ROHS2.0要求;
.MATERIAL:ALL MATERIALS ARE ROHS2.0 COMPLIANT;
绝缘件:高性能工程塑料;防火等级:UL94V-0;
.INSULATOR PARTS:HIGH-PERFORMANCE ENGINEERING PLASTICS; FLAME CLASS:UL94V-0;

.金属件:锌合金

.METAL PARTS:ZINC-ALLOY

.接触件:母针 铜合金镀金: 4U" MIN

CONTACT PARTS :FEMALE PIN:COPPER ALLOY 4U" MIN GOLD PLATED

.密封件:高弹性工程材料

.SEALING PARTS:HIGH ELASTIC ENGINEERING MATERIAL

2.电气特性:

.ELECTRICAL CHARACTERISTICS

.额定电流/额定电压/耐高压见表1:

CURRENT/VOLATAGE RATING/D.V.V SEE TABLE 1

.绝缘阻抗 INSULATION RESISTANCE:500MQ MIN.

.接触电阻 CONTACT RESISTANCE:1mΩ MAX.

.温升/TEMPERATURE RISE:30K MAX.

3.机械特性/MECHANICAL CHARACTERISTICS:

.插拔寿命/MATING CYCLES:500 TIMES MIN.

.保持力:500N MIN(插头插座锁紧后,不含线缆)

.RETENTION FORCE:500N MIN

(WHEN THE PLUG AND RECEPTACLE ARE LOCKED, NO CABLE IS CONTAINED)

4.环境特性/ENVIRONMENT CHARACTERISTICS:

.盐雾/SALT SPRAY:72H MIN.

.工作温度:-25°C~+105°C

.OPERATING TEMPERATURE:-25°C~+105°C

.防水等级:IP67 标品/IP68 可选(对插后)

.IP:IP67 STANDARD/IP68 OPTIONAL (WHEN MATED)

5.设计参考标准/DESIGN REFERENCE STANDARD:

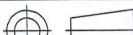




.UL1977 UL2238 IEC61984

6.外观参照PLUGOOD外观标准.

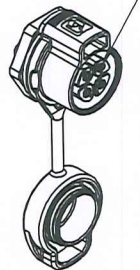
.APPEARANCE REFER TO THE PLUGOOD

APPEARANCE STANDARD;

表1/TABLE 1

序号 NO	料号 P/N	产品名称 PRODUCT NAME	额定电流 CURRENT RATING	额定电压 VOLATAGE RATING	耐高压 D.W.V	适用线径/ APPLICABLE WIRE DIAMETER	"L"	母针 FEMALE PIN	模块 SOLDERING (FEMALE)	一般公差		 东莞市普乐固技术有限公司 Dongguan Plugood Technology Co., Ltd			
										GENERAL TOLERANCES X.X ±0.15 X.X ±2° X.X X ±0.10 X.X X ±1°					
1	PLG20102101	PLG20 2芯单孔安装插座 PLG20 2P SINGLE-HOLE MOUNTING RECEPTACLE	20A	500V AC	2500V AC	12AWG/2.5SQ	10.7	2xΦ2.6		工艺 PROC Barry	日期 DATE 9.22/25	页次 SHEET 1/1	产品名称 PRODUCT NAME	见表1 SEE TABLE 1	
2	PLG20103102	PLG20 3芯单孔安装插座 PLG20 3P SINGLE-HOLE MOUNTING RECEPTACLE						3xΦ2.6		制图 DRAWN XRH	日期 DATE 9.19/25	版本 REV 1-1			料号 P/N
2	PLG20104101	PLG20 4芯单孔安装插座 PLG20 4P SINGLE-HOLE MOUNTING RECEPTACLE						4xΦ2.6		审核 CHECK Robin	日期 DATE 9.19/25	比例 SCALE 1:1	图号 DWG. NO.	PLG20102101	
									批准 APP'D JZ	日期 DATE 9.22	单位 UNIT mm				

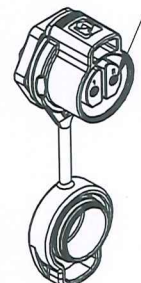
版本 REV	ECN 编号 ECN NO.	描述 DESCRIPTION	申请人 APPLICANT	日期 DATE
1-1	/	初版 INITIAL	XRH	2025/09/19

母针/FEMALE PIN
Φ2.6mm*4

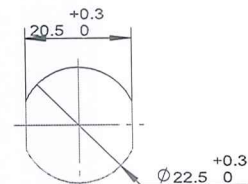
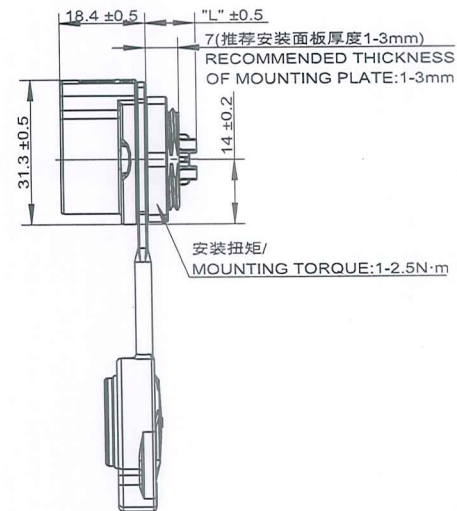
4芯/4P

母针/FEMALE PIN
Φ2.6mm*3

3芯/3P

母针/FEMALE PIN
Φ2.6mm*2

2芯/2P

单孔插座安装尺寸
SINGLE-HOLE RECEPTACE
MOUNTING SIZE安装扭矩/
MOUNTING TORQUE:1-2.5N·m